



ASLA
NEVADA

NVASLA is a non-profit 501(c)6. A portion of all annual sponsorships goes to higher educational institutions in Nevada to help educate future landscape architects.

NEWSLETTER

APRIL
Volume: 22
Number: 04



Belgard Commercial Moduline Series® pavers offer the ultimate design versatility for the Desert Palisades community

INSIDE THIS ISSUE

Sponsor Spotlight
Page 1

Meet a Member
Page 2

Student Essay from 2017 ASLA National Meeting
Page 3

Northern Section News
Page 5

Editor's Letter
Page 7

Awards
Page 8

President's Message
Page 15

Speaker/Sponsor
Page 16

Meetings & Events
Page 17

SPONSOR SPOTLIGHT: BELGARD

by Alfredo Soto

Local ordinance decreed Desert Palisades as the last hillside residential community to be constructed in Palm Springs, California, and it's going to be spectacular! Situated along the storied, sun-drenched landscape of Chino Canyon, this 110-lot enclave is poised to become the new model for extraordinary, modern architectural vision. Each home site is appointed to preserve the natural contours of the land, engage with the stunning, boulder-strewn topography and maximize views. Residents

are encouraged to enlist the world's top architects to customize their homes while adhering to a set of forward-thinking, resource-efficient, environmentally-sensitive community guidelines.

Issue

Due to a City of Palm Springs ordinance that prohibits the use of asphalt in the Chino Canyon area, pavers were considered as the best alternative for the development. To complement the world-class homes constructed in Desert Palisades, the architectural

and development team sought a unique option for the streets—specifically a multi-piece paver pattern that matched both the beauty of the canyon and the community's modern architectural vision.

Solution

"We chose Belgard for the Desert Palisades project because of the quality, size, pattern and color sections available that would blend with the natural environment," said Rob Parker, PLA, Design Principal for RGA Landscape Architects.

Continued on page 4



Create the settings for moments that *last a lifetime...*

Belgard is your resource for outdoor living inspiration, planning and installation. From charming walkways and welcoming patios to gourmet outdoor kitchens – the possibilities are endless.

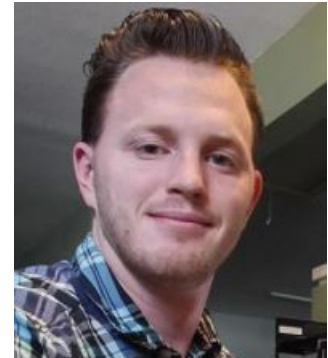
Start now with your **FREE** idea book at Belgard.com/AD



BELGARD®

MEET A MEMBER

Growing up Bret Nielsen could often be found wandering around his parent's property inspecting the season's growth and selectively training the plants to grow in a more pleasing way. His passion was the outdoors but instead of "just landscaping" he went to college in the pursuit of an engineering degree. At Utah State University Bret discovered landscape architecture by fulfilling a general education requirement, later switching majors from engineering to landscape architecture.



While engineering used to be a daily chore for Bret, landscape architecture projects were something exciting to look forward to. During his last year at school Bret was the president of USU's student chapter of ASLA, where he helped reignite the faltering student chapter bringing greater purpose and usefulness to the students.

When he graduated in 2014 he took a job with JW Zunino Landscape Architecture and moved to Las Vegas. He has integrated himself in to the local community by being a cub scout leader, and later a scoutmaster, as well as joining his master HOA's landscape subcommittee. Scouting has helped Bret to explore the surrounding environment with his favorite hike being the Arizona Hot Springs.

Since 2017 Bret has been the chapter membership chair for NVASLA.

Student Essay from 2017 ASLA National Meeting

By Freddy Godinez

This month, I had the opportunity to attend the ASLA Annual conference in Los Angeles—thanks to the sponsorship of the Nevada ASLA chapter. During the conference I had the pleasure of being surrounded by professionals in Landscape Architecture, and the experience has inspired me to work hard so that I can continue to grow in this profession. Additionally, during the conference I also had the opportunity to attend several educational sessions conducted by professionals in Landscape Architecture. I explored many of the exposition exhibits, and attended several social events where I was able to meet and network with other students and professionals.

My favorite educational session during the conference was titled, “At the Intersection of Big D Design and Cultural Landscape Stewardship.” The speakers represented firms from James Corner Field Operations, Michael Van Valkenburg & Associates, and West 8. The session included discussion about historic landscapes that face ongoing challenges when it comes to remaining successful and relevant in modern times. The session gave a professional perspective on how these projects incorporate forward-thinking design into the management, new design, and redevelopment of historic sites. The historic site discussion that caught my interest was the Gateway Arch Park Foundation, re-designed by Michael Van Valkenburg & Associates. The speaker was Michael Bolan. Bolan discussed the new design which built upon the original park design by Landscape Architect, Dan Kiley. In addition to preserving the design integrity of Dan Kiley, the new design included raising the riverfront 30 inches to decrease flood risk, adding 11 acres to the park including 5.1 acres of new pathways, and connecting the park to the city. The Museum of Westward Expansion and Gateway Arch Visitors Center located on the park grounds received a facelift and 46,000 square foot addition. The most transformative addition is the land bridge that spans the highway that used to separate the park from downtown. I am an advocate for maintaining the historic preservation of historic sites as well so I was very intrigued by this discussion. The new design of the Gateway Arch Park to me was a prime example of how the value of re-inventing the design of a historic landmark plays such an important role in the culture and life of its city. Michael Van Valkenburg & Associates were successful in both maintaining the integrity of the original design by Dan Kiley as well as redeveloping the sites to address circulation issues, environmental concerns, and improving the overall aesthetic and needs to keep up with the number of visitors and community members that visit the park. In addition to the education session, I was also able to explore and visit many exhibitors during the conference.



My favorite exhibitor at the ASLA conference was “Streetbond.” “Streetbond” are under the company GAF, and has been around for over 125 years. They promote the product to withstand the test of time. The product that they were showcasing during the conference was a pavement coating material that bonds permanently to asphalt surfaces to provide both an enduring, aesthetic finish and a low- maintenance surface that helps protect and extend the life of the pavement. The reason I mentioned that this product was my favorite was because the exhibitor was aware that I was from Las Vegas so he pitched the product to me by explaining how it reduced the heat island effect because of its UV ray reduction properties. When I asked the exhibitor if the product was porous (to help with storm water run-off and flooding in Las Vegas) he explained that it wasn’t, but that it helped direct water to proper drainage in streets. After leaving the exhibitor booth, I reflected on the conversation with the representative from “Streetbond” and realized that many products that are available for Landscape Architects help mitigate some issues but in some cases, create other problems.

Continued next page

STUDENT ESSAY

Continued from page 3

I have learned that it is important to understand all qualities of a product before applying it, and not only look at its value, but also its potential problems.

During the event I also had the opportunity to attend the Tailgate Social Event, which was definitely another favorite. During this event, alumni and current students from all over the country had the opportunity to mingle and network. It was great seeing school spirit from different schools and the opportunity to meet other peers and students from all over the country. Hopefully next year UNLV and Nevada ASLA will have the opportunity to represent themselves during this event.

To sum up, the ASLA Conference will become one of the highlight events of my time as a student at UNLV, and as a representative of the UNLV NVASLA chapter. I am grateful that I had the opportunity to attend many educational sessions including the one by Michael Van Valkenburg & Associates and the re-design of Gateway Arch Park, visit many exhibitors (including my favorite “Streetbond”), and be a part of a social event where I had the opportunity to network with professionals and other student members from ASLA chapters all over the United States. Thank you Nevada ASLA for the amazing opportunity to experience this event during my time at UNLV!



SPONSOR SPOTLIGHT

Continued from page 1

“In addition, we wanted a paver that had a finish consistent with the quality that is expected in a development of custom homes. Other manufacturers didn’t compare when shown to our clients. In a side-by-side test, the difference was notable.”

The pavers needed to be sturdy enough to handle the heavy-duty equipment rolling through during the multi-year construction phase. The Moduline Series® pavers fit the bill due to the product’s combination of amazing design versatility, 3 1/8” (80MM) thickness for vehicular traffic and solid durability. All units are based on 3” dimensional increments and the four sizes (12” x 12”, 6” x 12”, 6”

x 9”, 6” x 6”) to create a one-of-a-kind pattern. In addition, three colors (60% Elk Mountain; 20% Toscana; 20% Bella) were chosen to blend with the serene canyon setting.

To read the full case study on this amazing project and for more information on the Moduline Series® pavers, please visit Belgardcommercial.com.

Or Contact Alfredo Soto on how Belgard Commercial can help:
(702) 289-2754
alfredo.soto@oldcastle.com

“The biggest factor in our selecting Belgard, was their willingness and ability to produce a blend of pavers that fulfilled our design criteria.”

**Ed Freeman
Weston Investments**

COMPLETE OUTDOOR RECREATION



PLAY  for a Lifetime

800-457-5444

www.exerplay.com



NORTHERN SECTION NEWS

By Barb Santner

Reno Public Art Walking Tour

Held on March 15, 2018

On Thursday, March 15, 2018 the Northern Section of NVASLA convened at the Sierra Arts Gallery located in the historic Riverside Artist Lofts for a brief lunch, awards presentation, and a public art walking tour in downtown Reno. Our group hosted this program because of the increasing visibility of public art in Reno. Public art is often placed in streetscapes, plazas and parks which landscape architects are responsible for designing.

Our speakers included:

Eric Brooks | Sierra Arts Foundation (SAF)

Alexis Hill | City of Reno Arts, Culture and Special Events Manager

Megan Berner | City of Reno Public Art Program Coordinator

Maria Partridge | Art Department - Burning Man

First, Eric Brooks informed our group about the various services provided by the Sierra Arts Foundation (SAF). Since 1971 the SAF has provided regional services with an emphasis on teaching, nurturing, and supporting the arts in our community. SAF partners with the Washoe County School District to provide year-long arts instruction in local elementary schools. They also provide development and training, financial support, and promotional and marketing assistance for regional artists. Their current exhibit, *Textures of the Sierra Nevada*, was on display in the gallery featuring a spectacular selection of nature based, texture/mixed media quilts. This gallery space is one of several SAF venues for artists to perform and display their work. Continued on page 9

Classic TimberForm®

The natural way to play!



www.TimberForm.com



Columbia Cascade | 1-800/547-1940 | asla@timberform.com

THANK YOU TO OUR 2018 SPONSORS!

OLMSTED/TAHOE LEVEL

BELGARD

NEVADA SALES AGENCY

VICTOR STANLEY

GPH

ECKBO/PYRAMID LEVEL

TJK

FULL CIRCLE

A LA CARTE SPONSORS

UTELITE

MSWN

COLUMBIA CASCADE/TIMBER-
FORM

Interested in Sponsorship?
Check out the details [here!](#)

**NVASLA
EXECUTIVE
COMMITTEE**

President
Laura Miller
Making Place Studio, Inc.
president@nvasla.com

President Elect
Vacant
preselect@nvasla.com

Past President
Jack Zunino
JW Zunino Landscape
Architecture
pastpres@nvasla.com

Secretary/Treasurer
Tara Carell
Clark County RPM
ST@nvasla.com

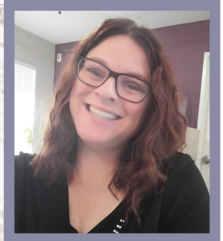
Trustee
Lucy Joyce
Retired Nevada Department
of Transportation
trustee@nvasla.com

Northern Section Chair
Jana Vanderhaar
Verdant Connections
Landscape Architecture, LLC
northsection@nvasla.com

Northern Section Secretary
Marc Chapelle
Lumos and Associates
mchappelle@lumosinc.com

Northern Section Treasurer
Marty Sillito
University of Nevada, Reno
msillito@unr.edu

By: Autumn Schneider



**E
D
I
T
O
R
I
A
L**

The last time I was an editor was in high school! Times certainly have changed from cutting out headlines, photographs, and content, placing them manually on a page to get just the right layout, and then sending it off to the press for publication. Computer programs have definitely changed the way most of us do business by allowing us to get a lot more done in a lot less time but sometimes I feel that technology has stolen more time from me than not. I mean who really needs access to everything 24 hours a day, 7 days a week?

Several years ago I dropped my phone in the Truckee River while rafting and I had to wait a week for the replacement. I think that was the most peaceful week I have had since I first got a cell phone back in 1999. I was not tied to my phone. I could go out and not be bothered by anyone. I still had a landline then so people were able to get ahold of me, but not having the cell phone constantly by my side was a breath of fresh air.

So here's my challenge to you this month. Take a break! Put the cell phone, tablet, laptop, bluetooth away for a bit of time each week. Do a whole day if possible. We can't be our best if we don't take a mental break from the stressors of life, and technology is definitely a stressor! Plop down in a comfy chair, grab a cup of coffee or tea or whatever comforts you, and read a good book. An actual book, with a spine and pages you can turn. If you don't have one, print out this newsletter and read it! Take time to enjoy the simple things and remember what it used to be like before technology and constant accessibility invaded our lives.

"Be the change you wish to see in the world"
- Mahatma Gandhi

REPRESENTATIVES

UNLV Liaison
Samantha Solano
UNLV Dept of Landscape
Architecture & Planning
samantha.solano@unlv.edu

UNLV Student President
Diandra Kamille Roth
rothdk@unlv.nevada.edu

Public Relations Chair
David Farley
Lage Design, Inc.
pr@nvasla.com

NVASLA Association Asst.
Autumn Schneider
info@nvasla.com

Membership Chair
Bret Nielsen
JW Zunino Landscape
Architecture
membership@nvasla.com

NVASLA Address
PO Box 97896
Las Vegas NV 89193
info@nvasla.com

Submit articles, updates, events, & photos to: editor@nvasla.com





TJK CONSULTING ENGINEERS, INC.

TJK is a local engineering firm with over 30 years of experience designing with landscape architects. Our experience includes over 350 parks, athletic fields, trails, and recreational facilities. Our projects include Lone Mountain Park, Sunset Park, Southwest Regional Soccer Complex, Craig Ranch Regional Park, Lorenzi Park, Insirpada Parks, Mountains Edge Park, etc.

LIFE THROUGH DESIGNSM

- Lighting design
- Electrical design
- Audio / Video design
- Mechanical design
- Plumbing design
- WiFi design



ELECTRICAL . MECHANICAL . PLUMBING . TECHNOLOGY

WWW.TJKENGINEERS.COM

AWARDS



April Sorenson/Landscape Architect in Training with Stantec, was awarded the annual ASLA dues prize that was donated by Marty Sillito/UNR Landscape Architect. Marty won this membership at the Pink Flamingo Banquet in December 2017 and he generously donated it. Our section conducted nominations for recipients. Congratulations to April and thank you to Marty for your generous donation!



Barb Santner and Lucy Joyce

Lucy Joyce/NVASLA Trustee, presented Barb Santner/ Senior Landscape Architect-Planner with Stantec the 2017 Trustee’s Award for her service to the NVASLA chapter. Thank you to all for this acknowledgement!

NORTHERN SECTION NEWS Continued from page 5

We then embarked on a blustery walk to the Reno City Plaza where both Alexis Hill and Megan Berner offered insights about the public art pices. The *Space Whale* is a 50-foot-tall glass and steel sculpture by artist Matt Schultz. The whale and calf sculpture was produced in The Generator art space for Burning Man in 2016 using many volunteers to assist in the production. The City of Reno paid \$64,086 using room tax funds for a 2-year exhibition contract. Down at the new river access plaza important landmarks in Nevada are embedded in the wall as steel, 3D topographic maps. This work was produced by local steel artists and fabricators Tutto Ferro. The *Believe* sculpture was purchased by the City for \$70,000 from Burning Man artists Jeff Schomberg and Laura Kimpton in 2015. This large piece is visible from Reno City Hall across the street. During the dedication ceremony Mayor Hillary Schieve stated that the statue represents the ethos she is striving to create in a city emerging from a difficult recession as a leader of creativity and innovation. The image of *Believe* is evident on the City of Reno's website. Other City Plaza pieces include signal boxes with colorful graphics.



Our group standing at the new river access plaza with Tutto Ferro metal sculpture- topo map of Nevada.



Playa Art Park

Next we walked north to the Playa Art Park. Maria Partridge coordinated this project working with Artech and the City of Reno Arts & Culture Commission using a Global Arts Grant. This second annual park occupies a vacant lot created by a recently demolished building. It consists of multiple art pieces that were on display at the Burning Man 2017 festival. Reno serves as a gateway to the Burning Man festival and this park has been extremely popular to those who want to see pieces from the festival. The art will be replaced annually.

Our final destination was the Bicentennial Sculpture Park. The Rotary Club of Reno approached the Reno Arts & Culture Commission and Public Art Committee in 2014 to

partner in the retrofit of the existing river park to establish a rotating outdoor exhibition of sculpture. The park was completed in 2016 in honor of the 100-year anniversary of the Rotary Club. Concrete pedestals and plinths accommodate sculpture and were incorporated into the existing park interspersed between existing trees and features. Through a local juried selection, six new sculptures were selected, and the works will be on display for approximately two years before being replaced.

Sculptures are available for purchase directly from the artists. Visitors can learn about all of the works in the exhibit by dialing a phone number on plaques installed at each piece and accessing the cell phone tour.



Our host Eric Brooks speaking at the Sierra Arts Gallery

Continued on page 11

LOOKING FOR LUNCH?
COME JOIN NVASLA!! SPONSORED BY
NEVADA SALES AGENCY

THE VALUE OF MARKETING IN THE NEW ECONOMY

APRIL 11TH 11:45 A.M. - 1:00 P.M.
SPEAKER: CRAIG S GALATI, AIA,
FSMPS, CPSM
PAST PRESIDENT SMPS

University of Nevada Cooperative
Extension, Room A and B
8050 Paradise Road
Las Vegas, NV 89123

3rd Annual



Describe a space that influenced your career in
landscape architecture, which can help others
relate to the profession.

Submit a short essay and a quick napkin sketch and you could win a
\$2,000 grant to fund your participation in the 2018 ASLA Annual Meeting
in Philadelphia. **21 grants** will be awarded.

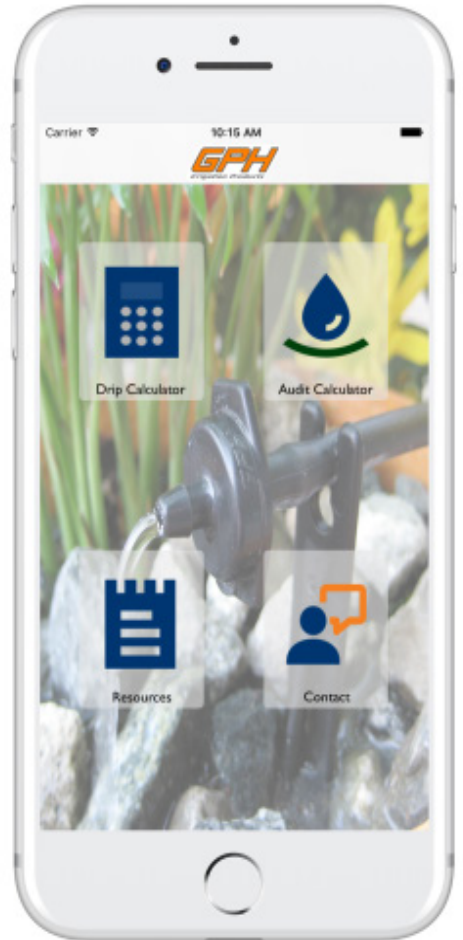
More Details at Anovafurnishings.com



Contributing to your success in the field.

Producing results in your hands.

**Saving you time and water,
with our dripline and audit calculator.**



Shelly Walker
909.648.3210
swalker@gphirrigation.com



NORTHERN SECTION NEWS

Continued from page 9



Bicentennial Sculpture Park with
'Nesting' - Jeff Schomberg

Nearby the *Portal of Evolution* sculpture by artist Bryan Tedrick is on display. The piece was purchased by the Reno arts and Culture Commission and Public Art Committee in 2012.

The City of Reno's Public Art Program is housed in the City Manager's Office and is overseen by the Reno Arts & Culture Commission with support from the Public Art Committee. Both are citizen committees appointed by the City Council. The City of Reno has prioritized public art in order to create vibrant neighborhoods and public places. Funding comes from the 2% for Art Ordinance and the Room Tax Fund. The public art collection includes over 185 permanent, as well as temporary, works of art. The economic benefits from Arts and Culture are incredible. A 2015/2016 study called Americans for the Arts AEP5 (Arts & Economic Prosperity 5) states that Arts and Culture related business are the 4th largest employer in Washoe County accounting for 2,658 jobs. This is an enormous economic benefit and one that the City of Reno continues to embrace.



landscapeforms®

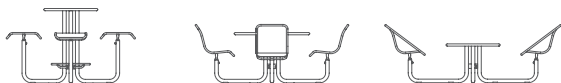
Nevada Sales Agency

Kathy Wilson
702.371.5045
kwilson@nevadasalesagency.com

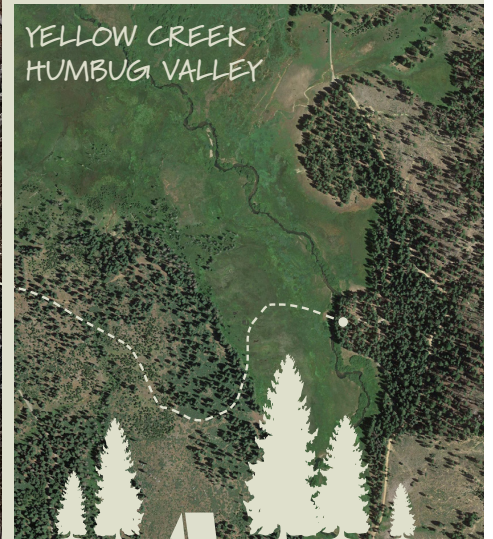
Edward Forlani
702.468.9655
eforlani@nevadasalesagency.com

Jazmin Miller
702.343.7434
jmillier@nevadasalesagency.com

Designed by Landscape Forms



DESIGN. CULTURE. CRAFT.



OVERVIEW

The Yellow Creek Campground design workshop will focus on exploring concepts for improvements to existing campsite facilities and recreational amenities within the **Tásmam Kojóm Maidu Cultural Park**, a park dedicated to the purposes of education, healing, protection, and ecosystem management based upon traditional Maidu cultural practices. The Maidu Summit Consortium and Conservancy, California Department of Fish and Wildlife, and the Feather River Land Trust have worked closely to finalize a comprehensive Land Management Plan that will guide stewardship and management of the 2300-acre alpine valley cultural park site as it transitions ownership from PG&E to the Maidu community. Design concepts from this workshop will support increasing public access to the park while protecting existing natural and cultural resources.

DETAILS

- LEAD PARTNER** > Maidu Summit Consortium and Conservancy
www.maidusummit.org
- WHERE** > Chester, CA (Plumas County)
- WHEN** > June 1-2, 2018
- NPS CONTACT** > Patrick Johnston, NPS-RTCA
patrick_johnston@nps.gov



*Our goal is a team of 8-10 landscape architects.
Lodging arrangements and meals provided!*

NPS | ASLA

In 2000, the National Park Service's Rivers, Trails, and Conservation Assistance (RTCA) program and the American Society of Landscape Architects (ASLA) established a national partnership agreement to help communities across the country plan, design, and manage their natural, cultural, and recreational resources.

Landscape architects from local ASLA chapters work with RTCA to provide pro bono technical assistance on conservation and outdoor recreation projects, addressing specific community planning and design challenges while raising awareness about the profession.

The volunteer service provided by ASLA members working in partnership with NPS over the past 18 years has assisted more than 70 community-based projects across the nation. In 2016, ASLA received the NPS Director's Partnership Award for their dedicated service to this program.



NSDC-36 with New Spherical Dome



Sage Dual
US Patent D800,405 S.



RSDC-36
US Patents D671,289 S;
D661,857 S.



SDC-36



Sage
US Patent D785,269 S.



A-36



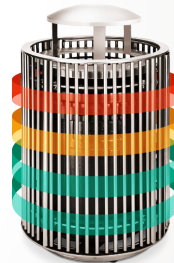
SD-42 with Dome



DYN-SD-36 with Dome
US Patents D573,766 S; D542,993 S;
D606,271 S; Canada © 114394.



SD-242 with Domes



SDRTC-40 with Dome

Being smart is always in style.

VICTOR STANLEY RELAY™ SENSOR AND SERVICE

Efficiency can be a beautiful thing. Our Relay technology continuously monitors fill level, conveys system temperature, weight, location via GPS and collection status, in real-time and historically. The sensor is invisible to the public eye, but you can log in and clearly see how to maximize efficiencies in collection planning, scheduling, and routing — an estimated 20-40% reduction in collection expenses. Whether you retrofit or make it part of new orders, Relay says a lot about how your community handles waste. Available in the styles and models above.

Contact George Blevins at georgeb@victorstanley.com



VICTOR STANLEY RELAY™

STREET LEVEL SENSING™ & WASTE CONTROL SERVICE

VICTOR  STANLEY®

Create a timeless moment.®

VICTORSTANLEY.COM

P
R
E
S
I
D
E
N
T
,
S

Seasonal Change

by Laura Miller, PLA, ASLA



president@nvasla.com

Spring showers are here. It is the season where new growth and blooms start to emerge from the ground once the sun comes out and warms the earth. Seasonally, the chapter has been forced to reorganize the Executive Committee from the ground up as well. We lost our Editor: Diego Alvarez, our Administrative Assistant: Nickie Hoffmann, and most recent our President-Elect: Steven Clarke. This may seem like an uncertain situation for the chapter, but really it has allowed us to evaluate and reorganize what is working and what is not working and make better decisions moving forward. We have found new energy in Autumn Schneider our current Administrative Assistant and Editor. Consolidating the efforts of the chapter administration and newsletter in many ways make sense.

On another note, regarding the Sunset Subcommittee Review, I have heard that we have cleared the review process with the decision for continuation with recommendations to the Nevada State Board of Landscape Architects (NSBLA). This situation was carefully overseen by Ellis L. Antunez, FASLA, Executive Director of the NSBLA, and board members. Additionally, it was decided by the review committee that electronic payments will be allowed to pay for registration fees overseen by the NSBLA and the continuing education credit requirements in order to maintain licensure will be adopted in the near future. What is next? We need to stay available and current in the minds of all state representatives. Lucy B. Joyce, ASLA, PLA, CPM our chapter Trustee encourages us all to invite any and all state representatives to site visits of projects that you are excited to share. This allows a first-hand field experience to what we do and why we do it. We cannot simply work on our projects and then go home. We need to stay current in the minds of our community.

Speaking of staying engaged, I hope to see you all on April, 11th at 11:45 a.m. You won't want to miss our April luncheon sponsored by the Nevada Sales Agency with Craig S. Galati, AIA, FSMPS, CPMS, Past President of the Society of Marketing Professional Services speaking on "The Value of Marketing in the New Economy". It is easy to get swept away with the deluge of a busy construction market and forget to keep the marketing ball rolling.

Lastly, we want positive and committed volunteers to oversee the chapter's mission and work. Election time is almost here again. We need volunteers that love our profession and don't mind spending a few hours a week being a part of the NVASLA team. Nothing lasts forever. Don't you want to take part in the direction of our state's profession? Please stay tuned to forthcoming election ballots!

M
E
S
S
A
G
E

NEVADA SALES AGENCY

S
P
O
N
S
O
R

Nevada Sales Agency has been a partner with the Landscape community here in Las Vegas, since we were founded in 1980. We build relationships and partnerships with every individual we work with to provide solutions for interior and exterior spaces with site furnishings and lighting, both critical in each space. Connecting people with the outdoors is our focus in the landscape and hardscape of your projects.



**Nevada
Sales
Agency**



Craig S Galati, AIA, FSMPS, CPSM, Past President SMPS



Craig Galati is principal of LGA a consulting firm practicing sustainability, architecture, and sociology. With over 30 years' experience as an architect and community outreach facilitator, Craig focuses on transformative strategic solutions resulting in organizational and operational excellence. He is past president of both the Las Vegas and Nevada chapters of the American Institute of Architects and Las Vegas Chapter of the Society for Marketing Professional Services. Craig is recipient of the "Silver Medal," AIA Nevada's highest individual award, honoring his lifelong contributions to the community and profession of architecture and is a Fellow in SMPS. Craig is the current SMPS Society Past President.

S
P
E
A
K
E
R

MEETINGS & EVENTS

Organizer: Laura B. Miller | president@nvasla.com

World Landscape Architecture Month

April 1-30

April Luncheon

Sponsor: Nevada Sales Agency

April 11, 2018 | 11:45 am

UNCE Rooms A and B

Executive Committee Meeting

April 12, 2018 | 4 pm

UNLV Paul B. Sogg Architecture

NVASLA Jury Review and Pizza for UNLV Chapter

April 20th, 2018 | 5 pm

UNLV Paul B. Sogg Architecture

ASLA Spring Meeting

April 25-28

April 26th Advocacy Day

April 27-28th CPC Meetings

UNLV Jury Week

April 31 – May 4th

Executive Committee Meeting

May 10, 2018 | 4 pm

UNLV Paul B. Sogg Architecture

[NVASLA Annual Golf Tournament](#)

May 11th, 2018 | Check in: 12:30 p.m.

Siena Golf Club

10575 Siena Monte Avenue | Las Vegas NV, 89135

Executive Committee Meeting

May 10, 2018 | 4 pm

UNLV Paul B. Sogg Architecture

NSBLA Meeting

June 8, 2018 | 11:00 am

5420 Kietzke Lane, Ste 202 | Reno, NV 89511

555 E. Washington Ave, Ste 3900 | Las Vegas, NV 89101
(video conference)

June Luncheon

June 13, 2018

Sponsor: GPH

Time: TBD | Location: TBD

Executive Committee Meeting

June 14, 2018

Time: 4 pm | Location: UNLV Paul B. Sogg Architecture

Executive Committee Meeting

July 12, 2018

Time: 4 pm | Location: UNLV Paul B. Sogg Architecture

Fall UNLV Social

August

Time: TBD | Location: TBD

August Luncheon

August 8, 2018

Sponsor: MSWN

Time: TBD | Location: TBD

Executive Committee Meeting

August 9, 2018

Time: 4 pm | Location: UNLV Paul B. Sogg Architecture

Luncheon

October 10, 2018

Sponsor: Exerplay

Time: TBD | Location: TBD

MEETINGS & EVENTS

Organizer: Laura B. Miller | president@nvasla.com

Executive Committee Meeting

October 11, 2018

Time: 4 pm | Location: UNLV Paul B. Sogg Architecture

October 18-29, 2018

Chapter Presidents Council Meeting

Philadelphia, PA

October 20-22, 2018

ASLA Annual Meeting & EXPO

Executive Committee Meeting

November 8, 2018

Time: TBD | Location: TBD

Executive Committee Retreat

December 7, 2018

Time: TBD | Location: TBD

NVASLA 20-year Anniversary Pink Flamingo

December 7, 2018

Time: TBD | Location: TBD

NOW HIRING

Gothic Landscape is looking for a RLA for our Las Vegas Branch. Below you will find the job description. Any interested candidates should contact lara.hubbard@gothiclandscape.com or call 661-220-4172.

Brief Description

Under direction, performs professional landscape architectural work as a landscape architect in the design and preparation of plans, specifications, and cost estimates for the development of landscape architectural projects; designs and redesigns facilities and landscaped areas. Special emphasis on luxury residential, model complexes, and entry monumentation/streetscapes/common areas. For more details click [here](#).

Urban Tree Structural Soil

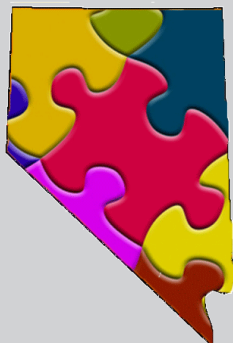


Riverside, CA

Utelite Corp. www.utelitesoil.com 801-243-9348

Want to become a member of NVASLA? Need to renew your membership?

Discover the many benefits of joining/renewing! Without the support of members the Nevada Chapter of ASLA would not be as strong as it is. Memberships allow NVASLA and ASLA National to provide you with monthly information on relevant developments within the field nor able to provide advocacy for you within the state of Nevada.



[JOIN HERE](#)

[RENEW HERE](#)

[BENEFITS](#)

THE NEWSLETTER 2018

Submit to editor@nvasla.com

Have you ever thought of writing an article?

How about sharing a photo or upcoming event?

Have an event, job opening or something else to announce?

Or maybe you just want to see your name/photo in print.

We'd love to highlight your creativity in the newsletter. Feel free to submit any relevant item to the newsletter editor.

Please limit articles to 350 words and be sure to include references or links for more information.

Submit to: editor@nvasla.com by the due date ahead of the month you'd like your article/image/event to appear.

NEWSLETTER SUBMISSION

DUE DATES:

04/18/2018

05/23/2018

06/20/2018

07/18/2018

08/22/2018

09/19/2018

10/24/2018

11/21/2018

12/19/2018

